



Road Management Services

Working on behalf of



0300 123 5000
www.nationalhighways.co.uk

8th August 2024

Concrete Carriageway Bay Replacement Work on A419/A417

We are planning essential maintenance at A419/A417. These works will affect various sections of the A419/A417, the remaining sections of the A419/A417 outside of the works area shall operate as usual.

What are the benefits to road users?

Our work will provide a safer and smoother journey for road users.

What work is being carried out?

The work being delivered is essential maintenance to the concrete carriageway on various sections of the A419/A417.

When and where will the work be carried out? (Traffic restrictions – check before you travel)

There will be **full weekend closures on the following sections from 20:00 hours on Friday until 06:00 hours on Monday** on the following dates:

- A417 Closure between Burford Road Interchange and Quarry Interchange Northbound – Friday 30th August to Monday 2nd September
- A419 Closure between Spine Road Junction and Burford Road Interchange Northbound – Friday 6th September to Monday 9th September
- A419 Closure between Burford Road Interchange and Spine Road Junction Southbound – Friday 13th September to Monday 16th September
- A419 Closure between Spine Road Junction and Lady Lane Junction Southbound – Friday 20th September to Monday 23rd September
- A419 Closure between Turnpike Junction and Spine Road Junction – Friday 27th September to Monday 30th September

Please note that there will be no disruption during daytime hours on weekdays. The A419/A417 will be fully operational as usual outside of the specified hours. Diversion routes will be signed and signage will also be in place before the start of works as a reminder.

Noise disruption

Due to the nature of the work, we are carrying out there will be times when the work will cause some noise disruption. Every effort will be made to keep the noise to a minimum and we will plan the work to take place at times which will cause least disruption, but please note there will be works 24 hours a day.

Diversion routes

The proposed diversion routes for each closure are outlined below. Maps are also attached to this letter to indicate the route.

Diversion Route 5 Northbound - A417 Closure between Burford Road Interchange and Quarry Interchange - Friday 30th August to Monday 2nd September

From the A417 Northbound Carriageway take the Burford Road Interchange exit slip road and take the 1st exit at the roundabout signed Cirencester A429, Stroud A419, Stratton.

At the next roundabout take the 3rd exit signed Gloucester A417, Cheltenham (A435).

Continue on the A435 to split then straight on signed Daglingworth / Birdlip (Follow old A417 NOT A435) to the roundabout at the A417 Quarry Interchange.

Take the 2nd exit signed M5, Gloucester A417.

Diversion Route 6 Northbound – A419 Closure between Spine Road Junction and Burford Road Interchange - Friday 6th September to Monday 9th September

From the A419 Northbound Carriageway take the Spine Road Junction exit slip road and then take the 2nd exit at the roundabout signed Cirencester, Stroud A419.

At 2nd roundabout take the 1st exit continuing on the A419 Northbound.

At 3rd roundabout take the 2nd exit signed Cirencester A419.

At 4th roundabout take the 3rd exit Cirencester A419, Cheltenham (A435), Motorway (M5), Gloucester (A417), Stow (A429).

At 5th roundabout take the 3rd exit signed Stow A429, Burford (B4425), Lechlade (A417).

At 6th roundabout take the 1st exit signed (M5), Gloucester A417 onto entry slip road to A417 Northbound Carriageway.

Diversion Route 6 Southbound – A419 Closure between Burford Road Interchange and Spine Road Junction - Friday 13th September to Monday 16th September

From the A417 Southbound Carriageway take the Burford Road Interchange exit slip and take the 4th exit at the roundabout over the A417 Carriageway signed Cirencester A429, Stroud (A419).

At 2nd roundabout take 1st exit signed Cirencester A429, Stroud (A419).

At 3rd roundabout take 1st exit signed The South West, Stroud, Swindon A419, Chippenham (A429).

At 4th roundabout take 1st exit signed Swindon A419.

At 5th roundabout take 1st exit signed Swindon A419.

At 6th roundabout take 2nd exit signed (M4), Swindon A419.

At 7th roundabout, South Cerney Junction, take 1st exit and continue over the A419 Carriageway.

At 8th roundabout take 3rd exit onto A419 Southbound entry slip road.

Diversion Route 14 Southbound – A419 Closure between Spine Road Junction and Lady Lane Junction - Friday 20th September to Monday 23rd September

From the A419 Southbound Carriageway take the Spine Road Junction exit slip road.

At 1st roundabout take 4th exit and travel along the B4696 Spine Road East to Aston Keynes. Continue to Royal Wootton Bassett using the B4042.

At 2nd roundabout take 2nd exit signed M4, Swindon, Interface, Woodshaw, A3102.

At 3rd roundabout take 1st exit signed M4, Swindon, A3102.

At 4th roundabout take 2nd exit signed Swindon, A3102.

At 5th roundabout take 2nd exit signed Town Centre, A3102.

At 6th roundabout take 2nd exit signed Great Western, North Star, Stratton, B4006.

At 7th roundabout take 1st exit to continue on B4006.

At 8th roundabout take 2nd exit signed Cirencester A419, Shaw, Hillmead.

At 9th roundabout take 2nd exit signed Cirencester A419, Hillmead, B4534.

At 10th roundabout take 2nd exit signed Cirencester A419, Sparcells, B4534.

At 11th roundabout take 2nd exit to continue on B4534.

At 12th roundabout take 2nd exit signed Cirencester A419, North Swindon, B4534.

At 13th roundabout take 2nd exit signed Cirencester A419, North Swindon, Blunsdon, B4534.

Continue along B4534 onto entry slip road to A419 Southbound Carriageway.

Diversion Route 14 Northbound – A419 Closure between Turnpike Junction and Spine Road Junction - Friday 27th September to Monday 30th September

From the Turnpike Northbound Exit Slip merge to the left, signed Swindon N&W A4311.

At 1st set of Traffic Lights continue onto Cricklade Road A4311, stay right.

At 2nd set of Traffic Lights continue straight onto Thamesdown Drive A4311, signed West Swindon.

At 3rd set of Traffic Lights continue straight on.

At 4th set of Traffic Lights continue straight on.

At 5th set of Traffic Lights continue straight on.

At 6th set of Traffic Lights continue straight on.

At 7th set of Traffic Lights continue straight on.

At 8th set of Traffic Lights continue straight on.

At 9th set of Traffic Lights continue straight on.

At 10th set of Traffic Lights continue straight on.

At Sparcells roundabout, take 2nd exit, signed M4, Hillmead, B4534.

At next roundabout take 2nd exit, signed M4, Hillmead, B4534.

At next roundabout take 1st exit, signed M4, Hillmead, B4534.

At next roundabout take 2nd exit signed M4, Shaw, B4534.

At next roundabout take 2nd exit to continue on B4534.

At next roundabout take 2nd exit signed M4, Town Centre, Westmead, Westlea, B4006.

At next roundabout take 3rd exit signed M4, Town Centre, Toothill, B4006.

At next roundabout take 2nd exit signed M4, Royal W. Bassett, Windmill, Blagrove, A3102.

At next roundabout take 2nd exit signed M4, Royal W. Bassett, A3102.

At next roundabout take 2nd exit signed M4 West.

At next roundabout take 2nd exit to continue on A3102.

At next roundabout take 2nd exit signed Malmesbury, Brinkworth, Cricklade, Ashton Keynes B4042.

Continue to Royal Wootton Bassett using the B4042 and travel to Ashton Keynes using the B4696.

Continue along B4696 onto entry slip road to A419 Northbound Carriageway.

Contact

Fatima Alawad (Stakeholder Support Manager)

Email: Fatima.Alawad@wsp.com

Yours sincerely,

A handwritten signature in black ink that reads "Mike Jackson". The signature is written in a cursive style with a large, prominent "M" and "J".

Mike Jackson
Road Manager

Enc.

Diversion Route Maps

A417 NORTHBOUND CLOSED BETWEEN BURFORD ROAD INTERCHANGE AND QUARRY INTERCHANGE



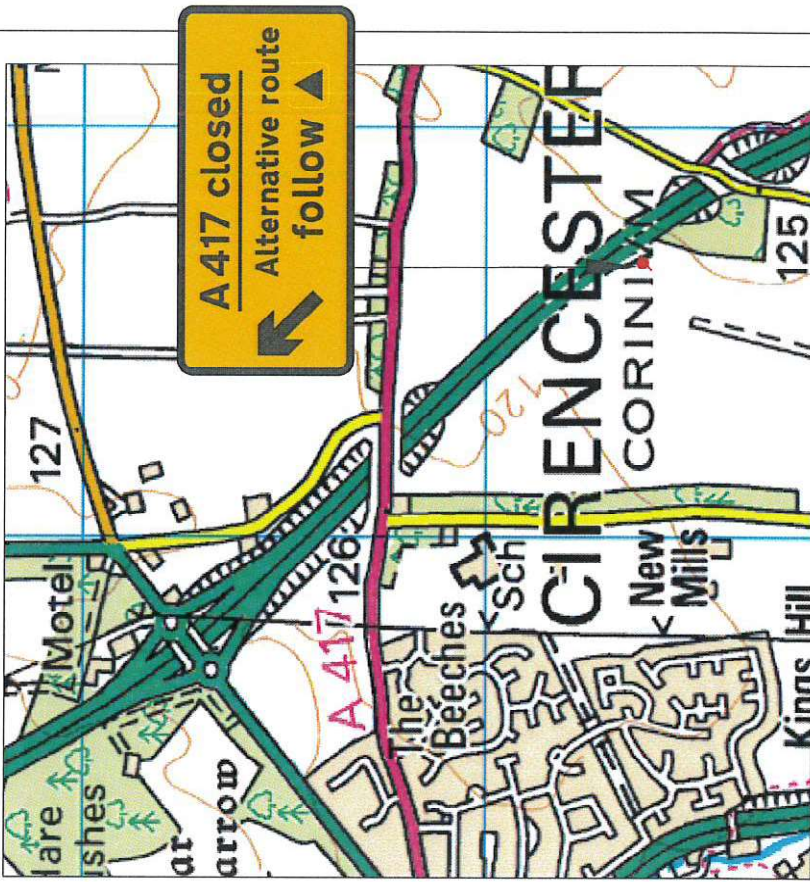
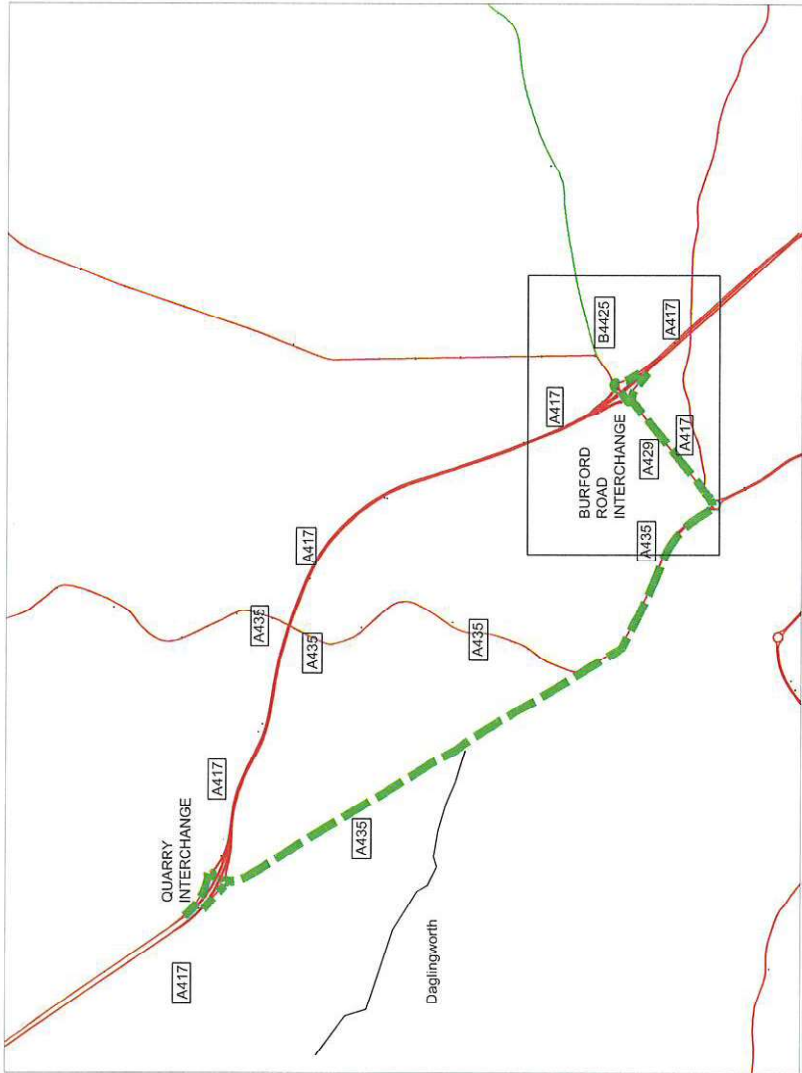
Diversion Route Symbol

Action Points

- Step 1: Close A417 Northbound carriageway at Burford road Interchange.
 - Step 2: Open trigger signs at Burford road Interchange Exit Slip road..
- Reverse procedure at end of closure.

A417 Northbound Main Carriageway at Burford Road Northbound Exit Slip Road.

Standard Road Closure to TMC requirements



This route was agreed as the preferred option by the following parties during 2007:
Highways Agency, R.M.S. Gloucestershire Police and Gloucester County Council



CLOSED BETWEEN BURFORD ROAD INTERCHANGE AND SOUTH CERNEY JUNCTION

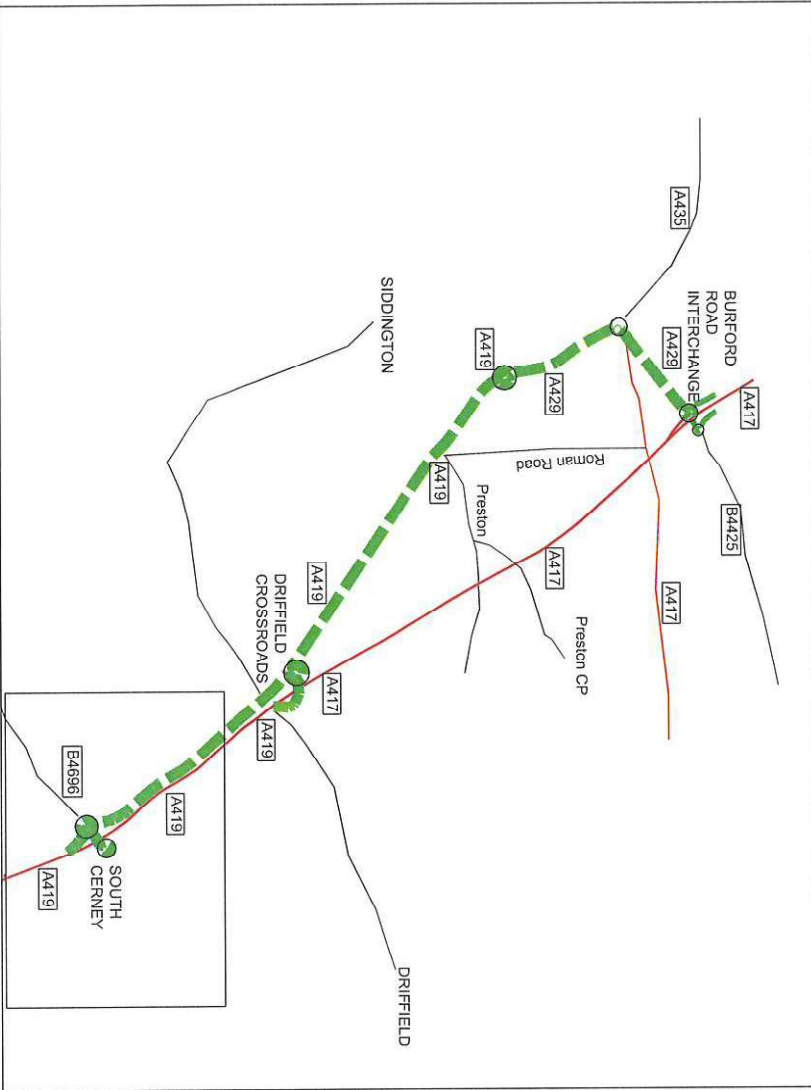
A419/A417 NORTHBOUND

Diversion Route
Symbol



Action Points
 Step 1: Close A419/A417 Northbound carriageway at Cerney junction.
 Step 2: Open trigger signs at South Cerney junction Exit Slip Road.
 Reverse procedure at end of closure.

A417 Northbound Carriageway at South Cerney
Northbound Exit Slip Road.
 Standard Road Closure to TMC requirements



This route was agreed as the preferred option by the following parties during 2007:
 Highways Agency, R.M.S. Gloucestershire Police and Gloucester County Council



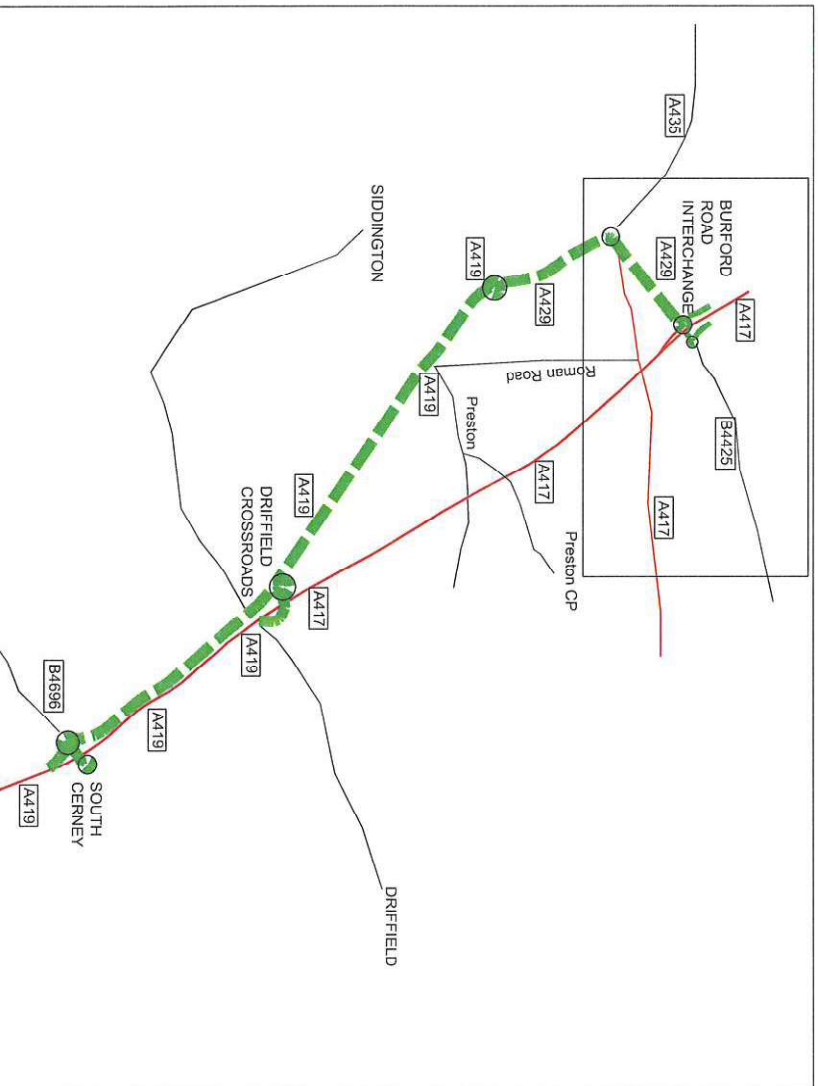
CLOSED BETWEEN CIRENCESTER (BURFORD ROAD) AND SPINE ROAD JUNCTION.

Diversion Route
Symbol



Action Points
 Step 1: Close A417/A419 Southbound carriageway at Burford Road Interchange.
 Step 2: Open trigger signs at Burford Road Interchange Exit Slip Road.
 Reverse procedure at end of closure.

A417 Southbound Main Carriageway at Burford Road Interchange Southbound Exit Slip Road.
 Standard Road Closure to TMC requirements



This route was agreed as the preferred option by the following parties during 2007:
 Highways Agency, R.M.S. Gloucestershire Police and Gloucester County Council



Diversion Route 6 (Southbound)
 Oct 2008

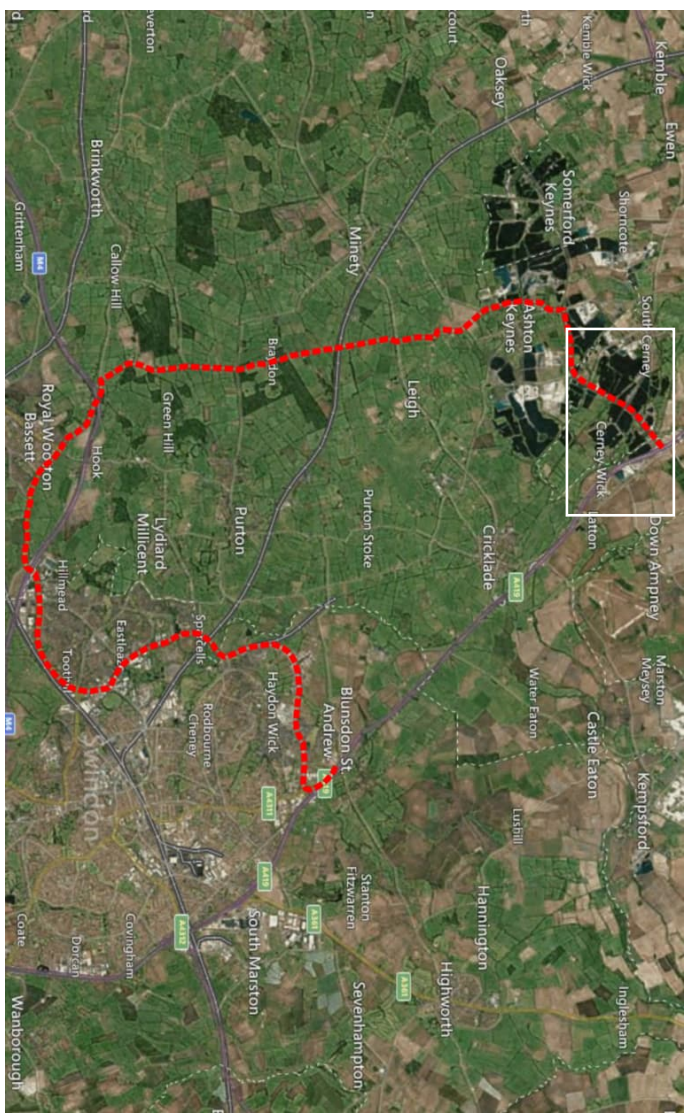
A419 SOUTHBOUND CLOSED BETWEEN SPINE ROAD JUNCTION AND LADY LANE JUNCTION

Diversion Route
Symbol



Action Points
 Step 1: Close A419 Southbound carriageway at Cerney Junction with B4696.
 Step 2: Open trigger signs at South Cerney Southbound Exit Slip Road.
 Reverse procedure at end of closure.

A419 Southbound carriageway at Cerney Junction with B4696.
 Standard Road Closure to TMC requirements



This route was agreed as the preferred option by the following parties during 2007:
 Highways Agency, R.M.S. Gloucestershire Police and Gloucester County Council



A419 NORTHBOUND

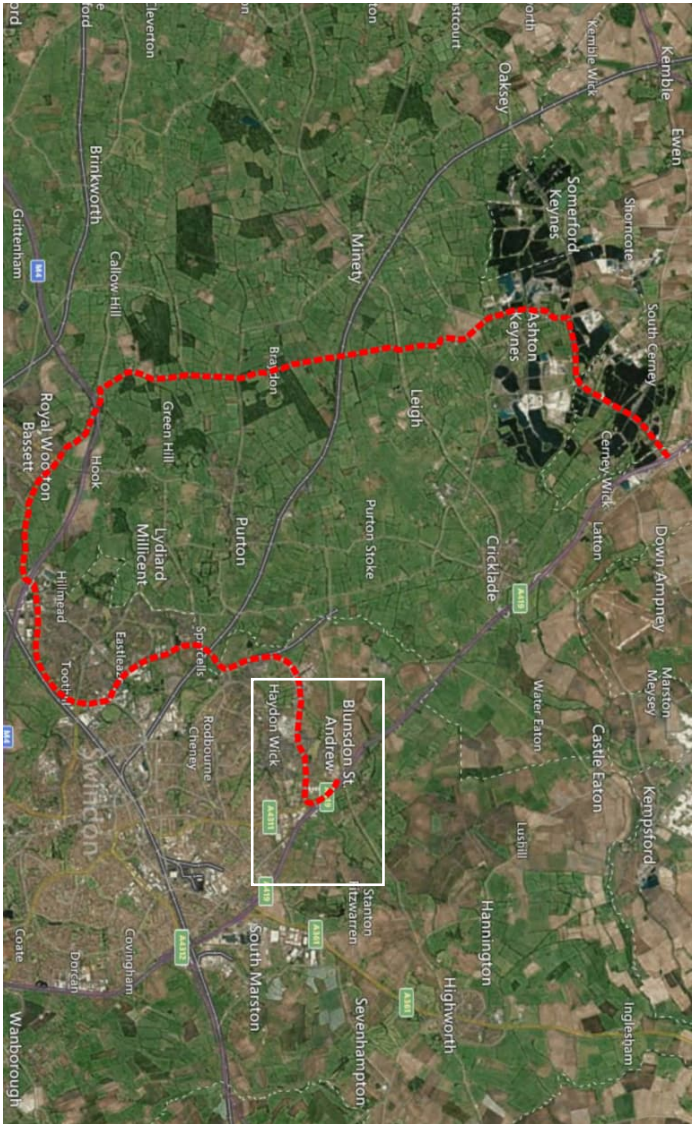
CLOSED BETWEEN TURNPIKE JUNCTION AND SPINE ROAD JUNCTION

Diversion Route
Symbol



Action Points
 Step 1: Close A419 Northbound carriageway at Turnpike Junction with A4311.
 Step 2: Open trigger signs at Turnpike Junction Northbound Exit Slip Road.
 Reverse procedure at end of closure.

Standard Road Closure to TMC requirements



This route was agreed as the preferred option by the following parties during 2007:
 Highways Agency, R.M.S. Gloucestershire Police and Gloucester County Council



Diversion Route 14 (Northbound)
 Aug 2024